



MISSION-CRITICAL DATA PROTECTION SYSTEMS



ENCRYPTED | SECURE | FAST | RELIABLE



Ciphertex-Protect®
Encryption Key



UP TO
60.8
TB HDD

SecureNAS CX-80KSD-X

Class-Leading Throughput and IOPS with Large Encrypted Tiered Storage Capacity in a Durable Package

Supporting up to eight hot-swappable 2.5" SSDs and up to two internal 2.5" SSDs, the **Ciphertex SecureNAS CX-80KSD-X** is a high-capacity, rugged, and reliable enterprise NAS powered by an Intel® Xeon® D (4, 8, or 16 Core) processor. Built-in Intel® AES-NI provides integrated support to enable fast and secure data encryption and decryption for a wide range of cryptographic applications, such as bulk encryption/decryption, authentication, random number generation, and authenticated encryption, providing strong security while also reducing performance impact. Designed to optimize enterprise IT infrastructure, the **Ciphertex SecureNAS CX-80KSD-X** comes with two PCIe slots that support 10GbE/40GbE NIC, PCIe SSD, as well as graphics cards. Incorporating security and scalability, the **Ciphertex SecureNAS CX-80KSD-X** presents an ideal choice for a complete business-ready storage solution with cross-platform file sharing, comprehensive backup and disaster recovery, iSCSI & virtualization, and many other business applications. The **Ciphertex SecureNAS CX-80KSD-X's** rugged enclosure ensures military-grade durability. For additional security, this system also includes a FIPS-certified encryption key that can be used for locking and unlocking encrypted volumes.

Features

- Intel® Xeon® processor D-1518 4-Core, with optional 8 and 16-Core expandability, featuring the latest 14nm energy-efficient SoC
- Dual 10GbE fiber & copper expandability for highly-efficient virtualization and intensive data transmission
- LCD display for real-time information and easier system management
- Compartmentalized smart cooling; detects CPU and hard drive temperatures to dynamically control fan speeds for quieter operation
- High-quality hardware enables optimum performance to fulfill diversified applications
- Hardware accelerated AES-256 bit encryption
- Supports four DDR4 memory modules for a maximum of 128GB RAM
- One built-in M.2 SATA 6GB/s slot to provide the greatest flexibility in tiered storage configuration with native high speeds that empower SSD caching
- Centralized management solution for networked computing devices
- Supports centralized storage, backup, sharing, and disaster recovery
- Optional 5 year warranty (3 years included)

Ciphertex CX-Linux OS Software

The new Ciphertex Linux-based CX-Linux OS, featuring ZFS has the ability to maintain the utmost data integrity. Not only does our OS inherit the amazing native features of ZFS, its powerful features ensure persistent, reliable storage management, protection against data corruption, seamless capacity expansion, several data integrity mechanisms, as well as pool and disk encryption protection.

ORGANIZATIONS WORLDWIDE TRUST THEIR DATA TO CIPHERTEX



SPECIFICATIONS

PERFORMANCE CPU	Intel® Xeon Processor D-1518 Socket FCBGA 1667 supported CPU TDP support 35W	IPMI	Support for Intelligent Platform Management Interface v.2.0 IPMI 2.0 with virtual media over LAN and KVM-over-LAN support
CORES/CACHE	4 Cores (upgradable to 8 and 16 Cores), 8 Threads /6MB Cache	NETWORK CONTROLLERS	Dual LAN with 10G SFP+ from D-1500 SoC; Dual LAN with 1GbE w/Intel® I210
MEMORY CAPACITY	Up to 128GB; Unbuffered ECC/non-ECC UDIMM, DDR4-2133MHz, in 4 DIMM slots	GRAPHICS	Aspeed AST2400 BMC
MEMORY TYPE	2133/1866/1600MHz ECC DDR4 ECC RDIMM and ECC/Non-ECC UDIMM	LED INDICATORS	Status/Power, USB, LAN
DIMM SIZES	4GB, 8GB, 16GB, 32GB	PUSH BUTTONS	Power, Reset, Copy
MEMORY VOLTAGE	1.2V	TEMPERATURE	0 - 60°C (32°F ~ 140°F)
ERROR DETECTION	Corrects single-bit errors Detects double-bit errors (using ECC memory)	SMART FAN	1 x 12cm (12V DC)
M.2 EXPANSION	M.2 Interface: 1 SATA/PCI-E 3.0 x4	WEIGHT	20.5 lbs (w/o drives)
SAS2	Broadcom 2116 SW controller for 16 SATA3 (6Gpbs) ports; SAS2 and SATA3	SIZE	Height: 9.8" (248.92 mm) Width: 11.25" (285.75 mm) Depth: 9.75" (247.65 mm)

All product specifications and data are subject to change without notice to improve security, reliability, function, design or otherwise.



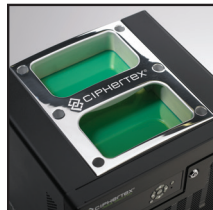
- A** - Durable handle
- B** - Power Button
- C** - LED Indicators
- D** - LCD Display
- E** - ESC Button
- F** - Enter/Arrow Buttons

- G** - Key Lock
- H** - One-Touch Copy
- I** - USB (Type-C Ports)
- J** - HDD Drives (8)
- K** - PCIe Extension
- L** - PCIe Extension

- M** - Cooling Fan
- N** - DB15 VGA Port
- O** - 10GbE SFP+ Ports
- P** - Optional 10G Ethernet Ports (4)
- Q** - RJ-45 1GbE (2)

- R** - USB 3.0 (Type-A Ports)
- S** - IPMI Port
- T** - Power Connector

*Thunderbolt 3 Ports available as option



All SecureNAS systems feature a durable, reliable, recessed handle for ease of transport without taking up valuable real estate.



Optional Custom Transport Cases are the optimal solution for migrating or transporting large amounts of data safely and efficiently. Environmental test lab certified.



All SecureNAS systems include a protective lockable door and a FIPS 140-2 certified encryption key to further protect both your physical NAS and data.



FCC CE COMPLIANCE - Designed/Assembled/Integrated/Tested in the USA using domestic and or foreign components. Made in the U.S.A.



Ciphertex-Protect® Encryption Key