



UP TO 490 TB SSD

MISSION-CRITICAL DATA PROTECTION SYSTEMS



Ciphertex-Protect® Encryption Keys



SecureNAS® Enterprise CX-160KSSD-X

Information in this data sheet applies to models:

SNCX160KSSD-X-4C-32G-120TB

SNCX160KSSD-X-4C-32G-240TB

SNCX160KSSD-X-4C-32G-480TB

A Vastly Superior Storage System with Expansive Storage, Data Transfer and Security

This high-capacity, reliable enterprise NAS is powered by an Intel® Xeon® D processor. It offers support for up to sixteen hot-swappable 15mm 2.5" SSDs and two internal 2.5" SSDs for the operating system. Featuring built-in Intel® AES-NI technology, the durable **SecureNAS® CX-160KSSD-X** enables fast and secure data encryption and decryption for a variety of cryptographic applications, providing strong security and reducing latency. With one PCIe slot, it allows for the expansion of network interface cards, optimizing your enterprise IT infrastructure. Designed with security and scalability in mind, the **SecureNAS® CX-160KSSD-X** offers cross-platform file sharing, comprehensive backup and disaster recovery, iSCSI & virtualization, and various other business applications, making it the ideal choice for a complete business-ready storage solution. The rugged design ensures military-grade durability, and for added security, it includes FIPS 140-2 (Level 3) certified encryption keys for locking and unlocking encrypted volumes.

Features

- Intel® Xeon® D-1518 CPU with 4-core (can expand to 8 or 16 cores)
- Complimentary dual 10GbE fiber (optional copper) for virtualization and data transfer
- LCD display for real-time info and easy system control
- Smart cooling adjusts fan speed
- Supports four DDR4 memory modules for a maximum of 128GB RAM
- One built-in M.2 SATA slot for flexible storage, high-speed SSD caching
- Centralized management for networked devices
- Pre-installed Operating System software included (no licensing fee)
- Centralized storage, backup, sharing, and disaster recovery support for varied applications
- Each key serial number syncs with the SecureNAS® serial number and customizable password
- Optional 5-year warranty (3 years included)
- **Maximum Data Security**
 - FIPS 140-2 Level 3 Certified
 - NIST 800-88 Compliance
 - AES-256 Encryption
 - HIPAA Compliance
 - Hardware Encryption Key
 - Key Lifecycle Management
 - Multi-Factor Authentication
 - Instant Secure Erase (ISE) Enabled
 - Rsync Supported
 - USB Blocker for Enhanced Security

RhinOS 24.1 (Operating System)

The RhinOS 24.1 featuring ZFS can maintain the utmost data integrity. Not only does our OS inherit the amazing native features of ZFS, it ensures persistent, reliable storage management, protection against data corruption, seamless capacity expansion, several data integrity mechanisms, as well as pool and disk encryption protection.

ORGANIZATIONS WORLDWIDE TRUST THEIR DATA TO CIPHERTEX®

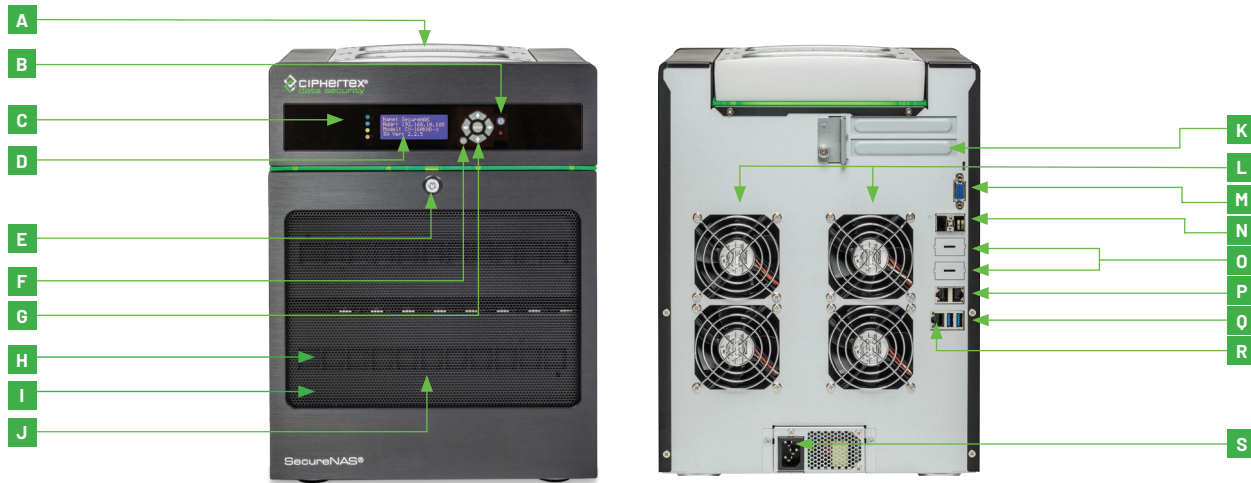


SPECIFICATIONS

PERFORMANCE CPU	Intel® Xeon Processor D-1518 Socket FCBGA 1667 supported CPU TDP support 35W
CORES/CACHE	4 Cores (upgradable to 8 and 16 Cores), 8 Threads /6MB Cache
MEMORY CAPACITY	Up to 128GB; Unbuffered ECC/non-ECC UDIMM, DDR4-2133MHz, in 4 DIMM slots
DIMM SIZES	4GB, 8GB, 16GB, 32GB
MEMORY VOLTAGE	1.2V
ERROR DETECTION	Corrects single-bit errors Detects double-bit errors (using ECC memory)
SAS2	Broadcom 2116 SW controller for 16 SATA3 (6Gpbs) ports; SAS2 and SATA3

NETWORK CONTROLLERS	Dual LAN with 10G SFP+ from D-1500 SoC; Dual LAN with 1GbE w/Intel® I210
GRAPHICS	Aspeed AST2400 BMC
LED INDICATORS	Status/Power, USB, LAN
PUSH BUTTONS	Power, Reset, Copy
TEMPERATURE	0 - 60°C (32°F ~ 140°F)
SMART FANS	12cm (12V DC)
WEIGHT	32 lbs (w/o drives)
SIZE	Height: 15.25" (387.35 mm) Width: 11.25" (285.75 mm) Depth: 10.5" (266.75 mm)

All product specifications and data are subject to change without notice to improve security, reliability, function, design or otherwise.

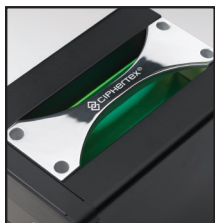


- A** - Durable handle
- B** - Power Button
- C** - LED Indicators
- D** - LCD Display
- E** - Key Lock
- F** - ESC Button

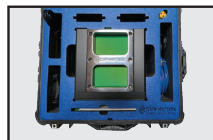
- G** - Enter/Arrow Buttons
- H** - One-Touch Copy
- I** - USB (Type-C Ports)
- J** - HDD Drives (16)
- K** - PCIe Extension
- L** - Cooling Fans

- M** - DB15 VGAPort
- N** - 10GbE SFP+ Ports
- O** - Optional 10G Ethernet Ports (4)
- P** - RJ-45 1GbE (2)
- Q** - USB 3.0 (Type-A Ports)

- R** - IPMI Port
- S** - Power Connector
- *Optional Thunderbolt 3 Ports



All SecureNAS® systems feature a durable, reliable, recessed handle for ease of transport without taking up valuable real estate.



Custom Transport Cases are the optimal solution for migrating or transporting large amounts of data safely and efficiently. Military Environmental test lab certified.



All SecureNAS® systems include a protective lockable door and a FIPS 140-2 certified encryption key to further protect both your physical NAS and data.



FCC CE COMPLIANCE - Designed/Assembled/Integrated/
Tested in the USA using domestic and/or foreign components.
Made in the U.S.A.



(2) Ciphertex-Protect® Encryption Keys are seamlessly integrated with RhinOS 24.1 and offer superior authentication for your SecureNAS®. These encryption keys support FIPS 140-2 level 3 security standard. See quick-start guide for pairing instructions.